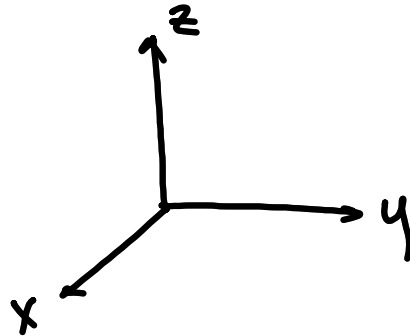
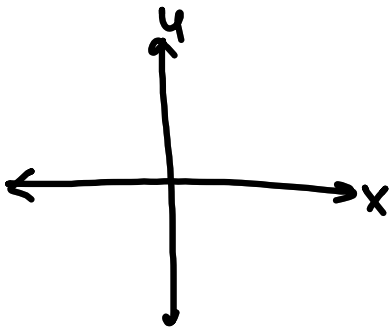
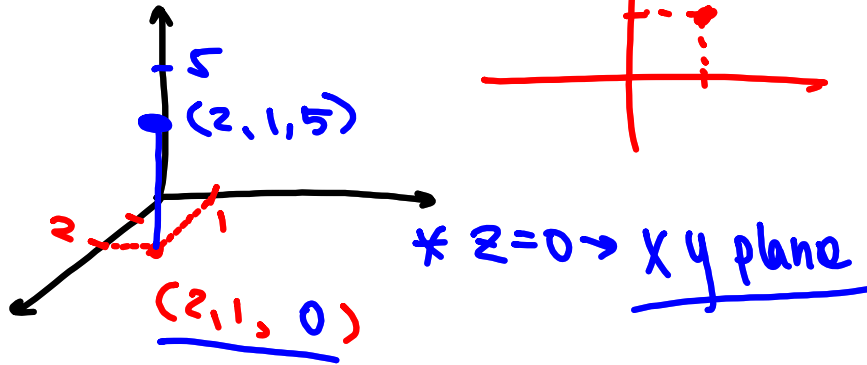
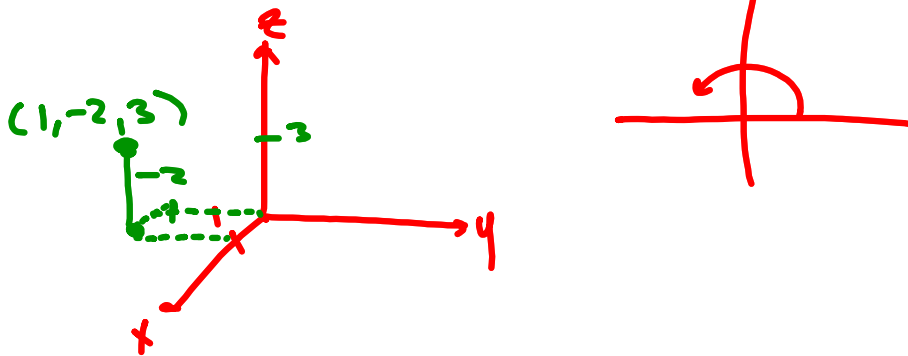


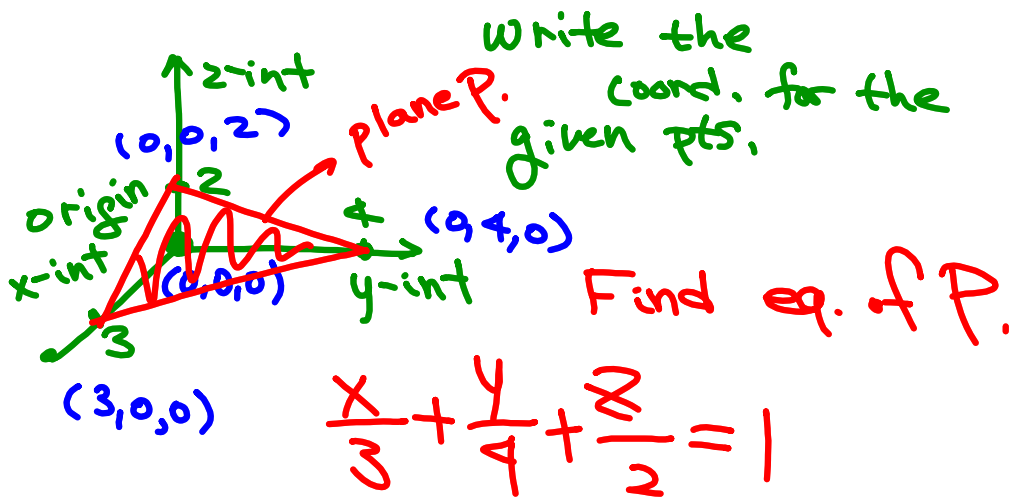
SoowookLee.weebly.
com

Multi.

$$(x, y) \rightarrow (x, y, z)$$



Plot. $(2, 1, 5)$ Plot $(1, -2, 3)$ 



Let $2x + 3y + 4z = 12$

Find x , y , & z int.

$$\begin{aligned} x\text{-int} &= 6 \\ y\text{-int} &= 4 \\ z\text{-int} &= 3 \end{aligned}$$

