

Name: _____

Class/Period: _____

Assignment: quadratic 1

Teacher: Lee

1 The solutions to $(x + 4)^2 - 2 = 7$ are

- 1 $-4 \pm \sqrt{5}$
- 2 $4 \pm \sqrt{5}$
- 3 -1 and -7
- 4 1 and 7

2 Which expression is equivalent to $18x^2 - 50$?

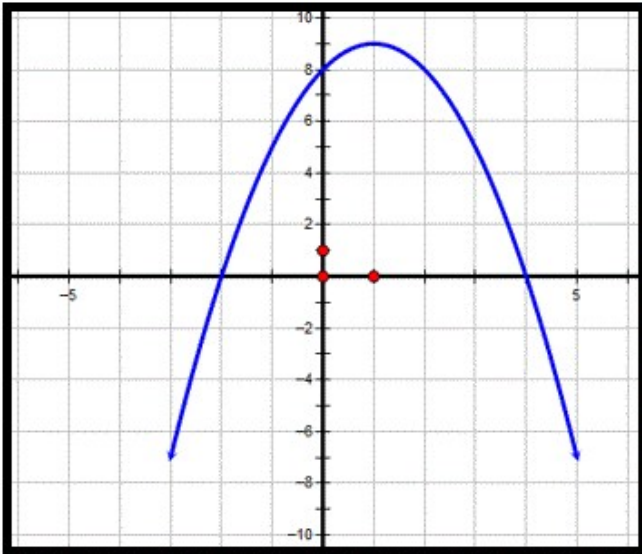
- 1 $2(3x + 5)^2$
- 2 $2(3x - 5)^2$
- 3 $2(3x - 5)(3x + 5)$
- 4 $2(3x - 25)(3x + 25)$

3 Which equation has the same solution as $x^2 - 10x + 18 = 0$?

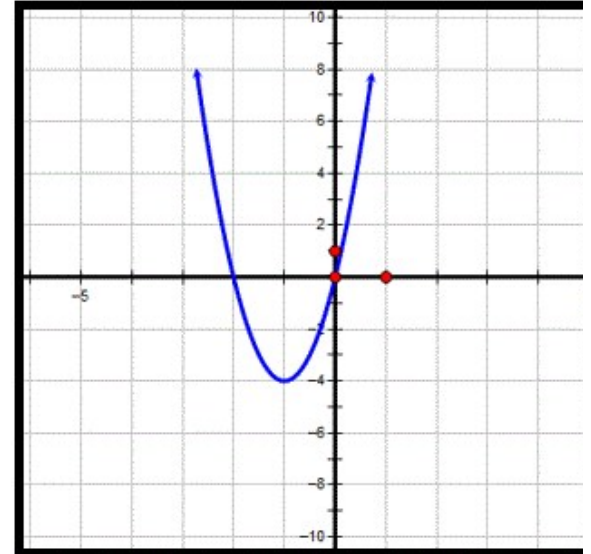
- 1 $(x - 5)^2 = 7$
- 2 $(x + 5)^2 = 7$
- 3 $(x - 5)^2 = 43$
- 4 $(x + 5)^2 = 43$

4 Which choice is the graph of $y = (4 - x)(x + 2)$?

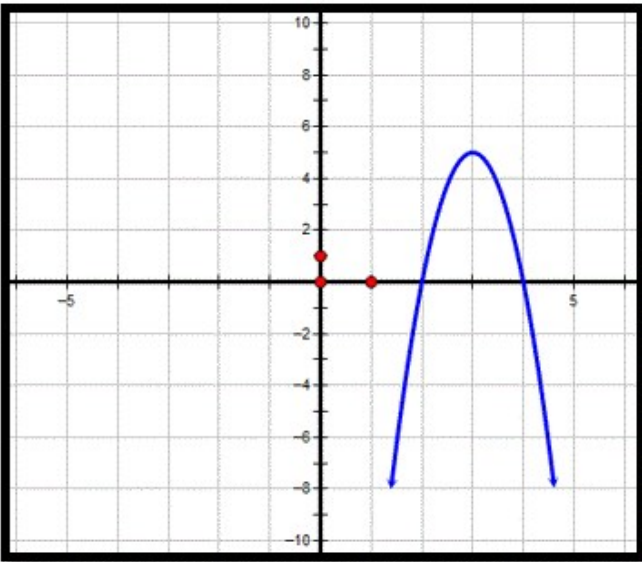
1



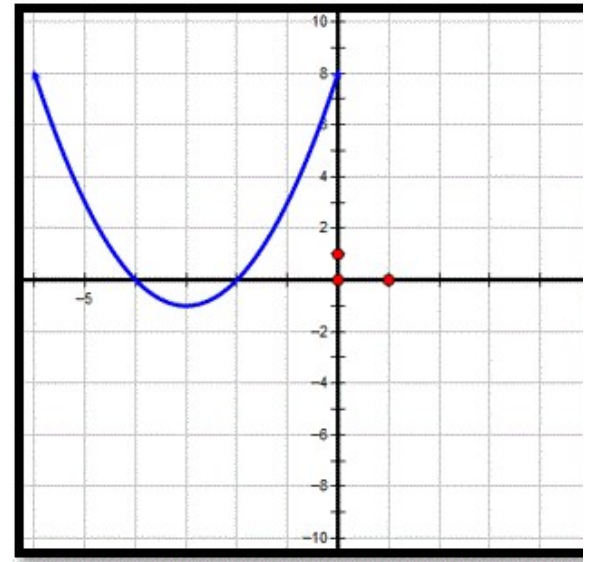
3



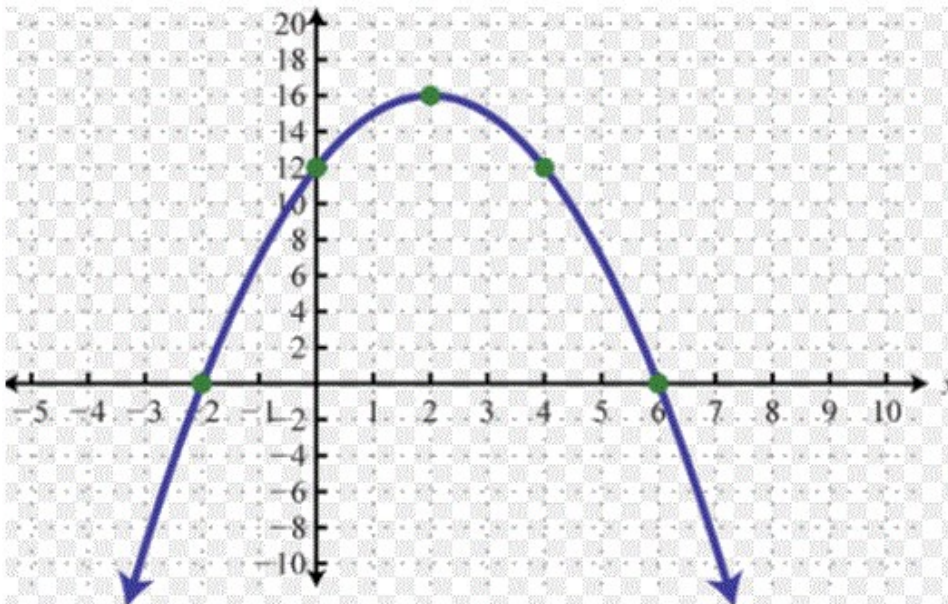
2



4



5 The graph of a quadratic function is shown below:



What are the coordinates of the vertex of the function?

- 1 (-2,0)
- 2 (0,12)
- 3 (2,8)
- 4 (2,16)

6 The expression $-5t^2 + 20t + 1$ represents the height, in meters, of a baseball t seconds after it was hit into the field. The initial height of the baseball is

- 1 1 meter
- 2 2 meters
- 3 5 meters
- 4 20 meters