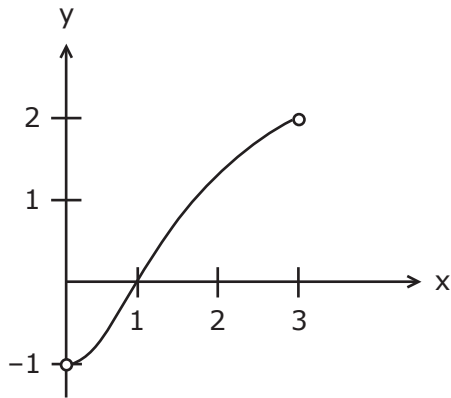


47.) The solution to $x^2 + 5 < 9$ is

- a) $x < -2$ or $x > 2$
- b) $-2 < x < 2$
- c) $x < 2$
- d) $x < -2$ or $x < 2$
- e) $x < -2$

48.) The graph of a function $y = f(x)$ is given by



The domain of the inverse $f^{-1}(x)$ is the set of real numbers between

- a) 0 and 3
- b) -1 and 1
- c) -1 and 2
- d) -1 and 3
- e) 1 and 3

49.) Phil bikes a distance of x miles at a rate of 15 miles per hour. How many hours did the trip take?

- a) $15x$
- b) $\frac{x}{15}$
- c) $\frac{15}{x}$
- d) $x - 15$
- e) None of these

50.) If $f(x) = x^2 + 1$, then $\frac{f(x+h) - f(x)}{h} =$

- a) $x + h$
- b) h
- c) $h + 2$
- d) $2x + h + 2$
- e) $2x + h$

51.) Find all solutions of the equation

$$x^4 - 10x^2 + 9 = 0.$$

- a) -1 and 1
- b) -3 and 3
- c) 1 and 3
- d) 1 and 9
- e) -1, 1, -3 and 3