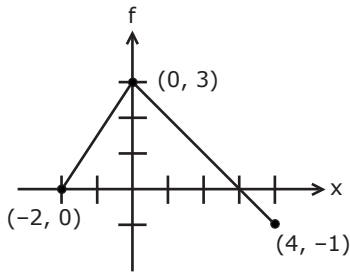
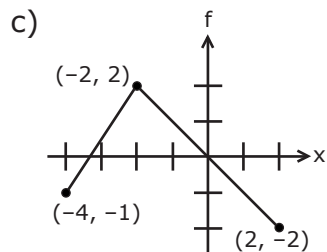
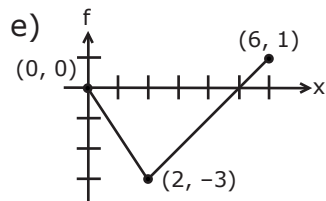
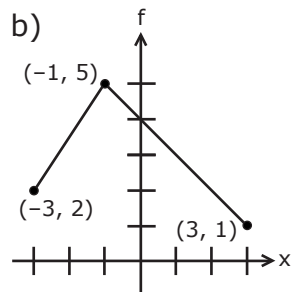
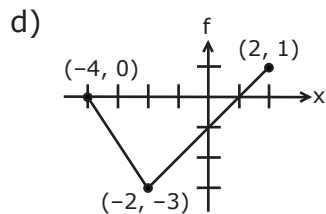
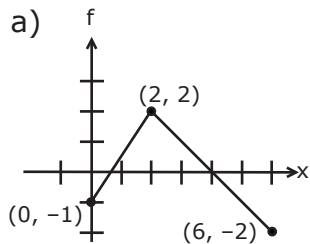


42.) If the graph of  $y = f(x)$  is



then which of the following is the graph of  $y = f(x + 2) - 1$  ?



43.)  $|6 + 3x| < 9$  is equivalent to

- a)  $-1 < x < 1$
- b)  $1 < x < -5$
- c)  $x < 1$
- d)  $-5 < x < 5$
- e)  $-5 < x < 1$

44.) How many pounds of peanuts at \$2 per pound should be mixed with ten pounds of cashews at \$5 per pound to make a mixture worth \$3 per pound?

	POUNDS	COST/POUND	VALUE
Cashews	10	\$5	\$50
Peanuts	x	\$2	\$2x
Mixture	$10 + x$	\$3	$\$3(10 + x)$

- a) 10
- b) 20
- c) 25
- d) 30
- e) 40

45.)  $\frac{(3y)^{-2}(9y^2)}{3y^{-4}} =$

- a) 27
- b)  $\frac{1}{9}$
- c)  $\frac{3}{y^6}$
- d)  $\frac{y^4}{3}$
- e)  $-\frac{y^4}{3}$

46.) If  $3 \log x = \log 8$ , then  $x =$

- a)  $\frac{8}{3}$
- b) 2
- c) 8
- d)  $\frac{\log 8}{3}$
- e)  $\log\left(\frac{8}{3}\right)$